



Kingswood™ 1.5
Hybrid Plank

Kingswood™ 1.5

Hybrid Plank

Kingswood™ 1.5 offers authentic hardwood designs, suitable for both modern and classic style homes.

Combining all the desired flooring features, Kingswood™ 1.5 Hybrid offers great cleanability, low maintenance, and exceptional durability for everyday wear. Guaranteed with a 25 year residential warranty*, Kingswood™ 1.5 is built to stand up to everyday scuffs, scratches, and stains, ideal for households with pets and children.

Features & Benefits

CeraShield™ Surface Technology with ceramic bead ensures a low maintenance home with improved scratch, scuff and stain resistance.

A-LITE Core Technology™ gives perfect stability and uses 20% less material than standard SPC hybrid products. Installation becomes easier with the lighter weight structure, paired with the industry's most reliable locking system.

XFD Acoustic Backing™ offers a comfortable floor, absorbing noise and echo to create a quieter living space.



Latest Technology
20% lighter than standard hybrid products with A-Lite Core Technology™.



CeraShield™ Protection
Ceramic bead surface for scuff, stain, and dent resistance.



Easy Clean
Low maintenance making it ideal for everyday living.



Scratch Resistant
Family and pet friendly with scratch resistant properties.



Durable
Hard-wearing so you can enjoy your floors for longer.



Residential Warranty
*25 year residential warranty. Commercial warranty on request.



Waterproof Surface
Suitable for spill prone areas like kitchen.^



Stain Resistant
PUR Coating for improved stain resistance, ideal for kitchens.

^Subject to proper installation and care and maintenance as set out in the Armstrong Flooring Installation Instructions and Cleaning and Care Instructions.

*All warranties are in addition to any rights consumers may have under Australian and New Zealand consumer laws. Terms and conditions apply - for full information in respect to the scope of the residential warranty, please see armstrongflooring.au or armstrongflooring.co.nz or contact our Head Office, or for the commercial warranty, contact your Armstrong Flooring representative.



Kingswood™ 1.5

Euro Oak

A warm blonde timber design that will elevate any coastal or contemporary style home.





Kingswood™ 1.5
1500 x 182 x 6.5 mm



Chardonnay Oak | 105



Silver Oak | 110



Euro Oak | 150



Malt Oak | 175



Jamieson Oak | 130



Booker Oak | 140



Cocoa Oak | 190



Somerset Blackbutt | 215

Kingswood™ 1.5
1500 x 182 x 6.5 mm



Blackbutt Traditional | 250



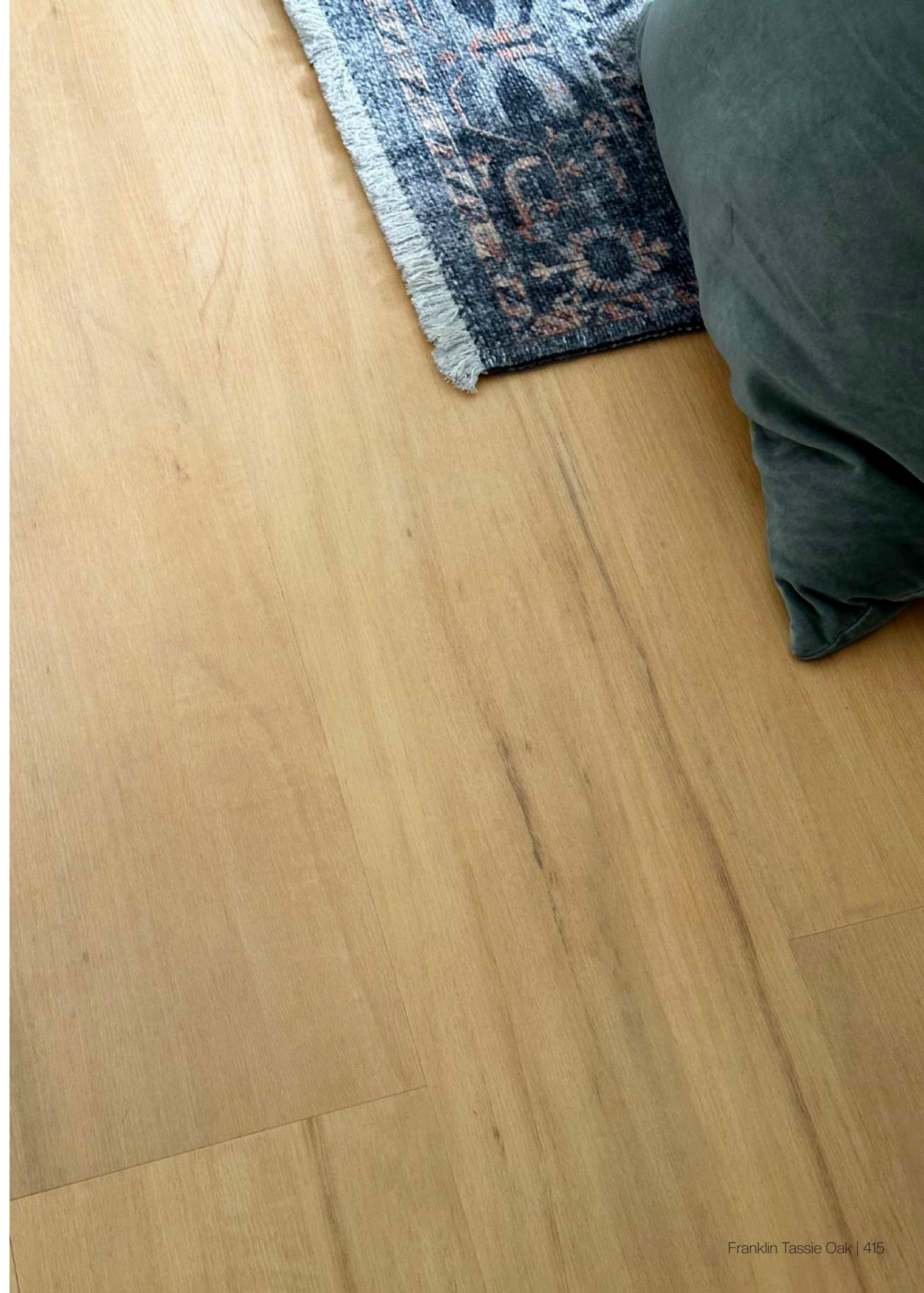
Spotted Gum Traditional | 360



Franklin Tassie Oak | 415



Tasmanian Hardwood Classic | 450



Kingswood™ 1.5

Product Specifications

Product Classification

Type of floor covering	EN/ISO 10582	Hybrid Flooring
Classification	ISO 10874	Domestic Heavy Duty (23)
		Commercial Heavy Duty (33)
Warranty*	Domestic	25 years
	Commercial - available upon request	15 years

*All warranties are in addition to any rights consumers may have under Australian and New Zealand consumer laws. Terms and conditions apply - for full information in respect to the scope of the residential warranty, please see armstrongflooring.au or armstrongflooring.co.nz or contact our Head Office, or for the commercial warranty, contact your Armstrong Flooring representative.

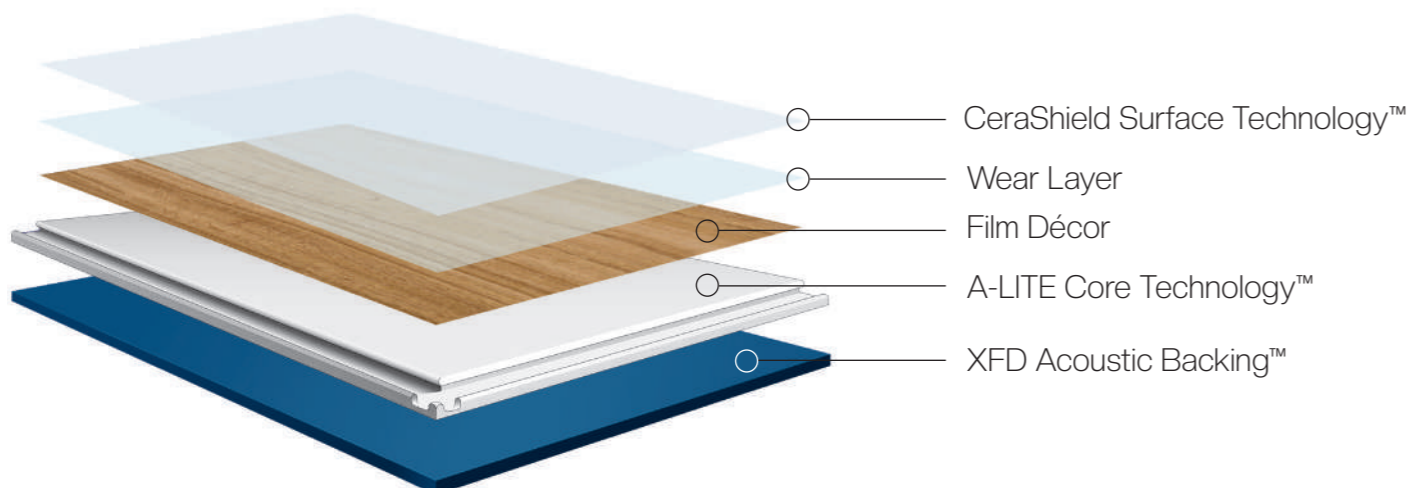
Product Structure

Dimensions (mm)	1500 x 182 x 6.5 mm
Surface treatment	CeraShield™ Surface Technology
Wear layer (mm)	0.55 mm
Bevel	Micro
Core Type	A Lite® Core Technology™
Backing Type	1.50 mm XFD Acoustic Backing™
Locking System	Angle/Angle - Side Tap (Manufactured under license from Unilin BV)

Packaging

Planks/carton	8
m ² /carton	2.18
Kg/carton	19.7

Product Structure



Product Testing

		Standard	Requirement	Result
Slip	Wet Pendulum	AS4586	-	P3
Fire	Critical radiant flux	AS ISO 9239-1	≥ 4.5kW/m ²	9.9kW/m ²
	Smoke development rate	AS ISO 9239-1	≤ 750%.minutes	85%.minutes
Acoustic	Impact sound insulation <small>(150mm concrete slab with drop ceiling - 288mm cavity, 50mm glass wool insulation, 12mm gypsum board)</small>	ISO 10140-3 ISO 717-2	≤ 62dB	Ln,w = 40dB (6 Star)
	Impact insulation class <small>(150mm concrete slab with drop ceiling - 288mm cavity, 50mm glass wool insulation, 12mm gypsum board)</small>	ASTM E989-21	-	IIC = 70
	Improvement of impact sound insulation <small>(200mm concrete slab)</small>	ISO 10140-1 ISO 717-2	-	ΔLw = 20dB
Surface	Abrasion	EN660-1	Group P	Group T
	Castor chair (no IXPE)	ISO 4918	≥ 25,000	25,000
	Martindale (wear resistance)	EN16094	MSR-B2	MSR-B1
	UV adhesion	-	≥ 2	2
	Colour fastness	ISO 105-B02	≥ 6	6
Core	Deviation on end click	EN428	+/- 0.12mm	0.00mm
	Dimensional tolerance	EN427	Length ± 0.30mm	Length 0.01mm
			Width ± 0.12mm	Width 0.01mm
	Peel strength	ISO 24345	> 50N	112N
	Shrink-vertical % (80°C 6hr)	ISO 23999	≤ 0.25%	0.069%
	Shrink-horizontal % (80°C 6hr)	ISO 23999	≤ 0.25%	0.044%
	Curling (80°C 6hr)	ISO 23999	≤ 0.25%	0.09mm
	Click Lock Strength	EN431	≥ 110N	Horizontal: 189N
				Vertical: 201N
Residual indentation	ISO 24343	≤ 0.4mm (with IXPE)	0.09mm	

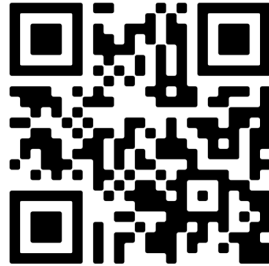
Sustainability

Global GreenTag GreenRate Level A



Explore the range

www.armstrongflooring.au/kingswood1.5



www.armstrongflooring.co.nz/kingswood1.5



ArmstrongFlooring™

Australia

29-39 Mills Road, Braeside VIC 3195

1800 632 624

customerservices@armstrongflooring.au

www.armstrongflooring.au

New Zealand

39/332 Great North Road, Grey Lynn, Auckland 1021

0800 449 649

customerservices@armstrongflooring.co.nz

www.armstrongflooring.co.nz